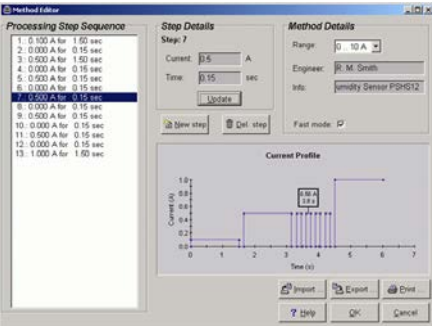
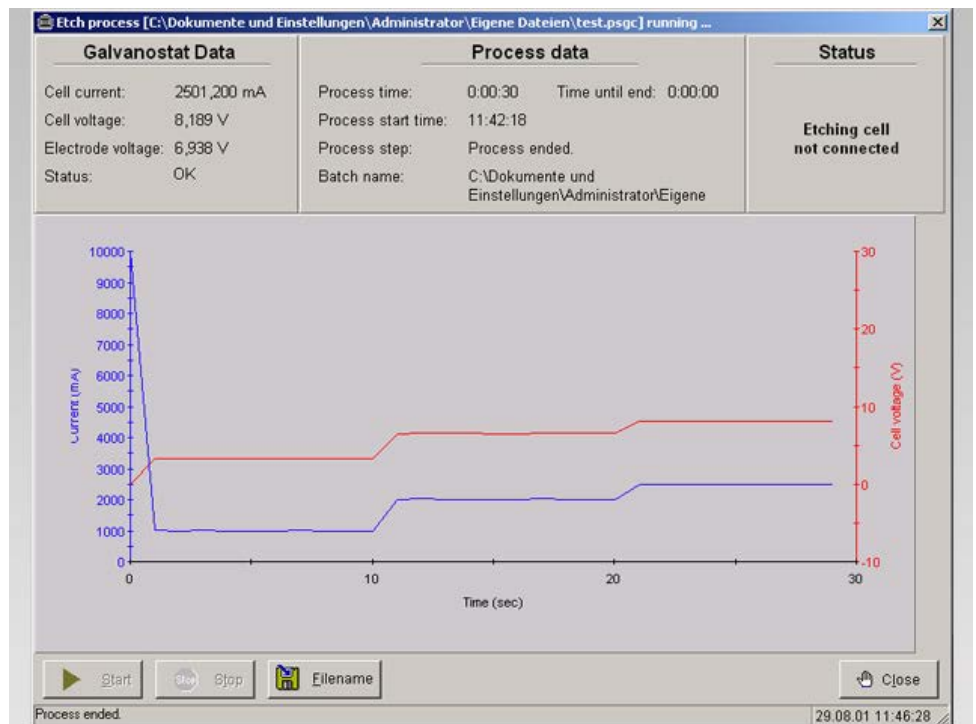


Screenshot of the current profile editor



Computer control is one of the main features of AMMT's Porous Silicon Power Supply PS2. Each PS2 comes with Windows based software, dedicated to control a porous silicon etching process. It allows one to:

- define and edit time-based current profiles for etching,
- change all PS2 parameters in real-time,
- monitor all relevant information during the etching process and to store it in data files,
- print and store concise reports for each etching process.



Screenshot of the process control window.